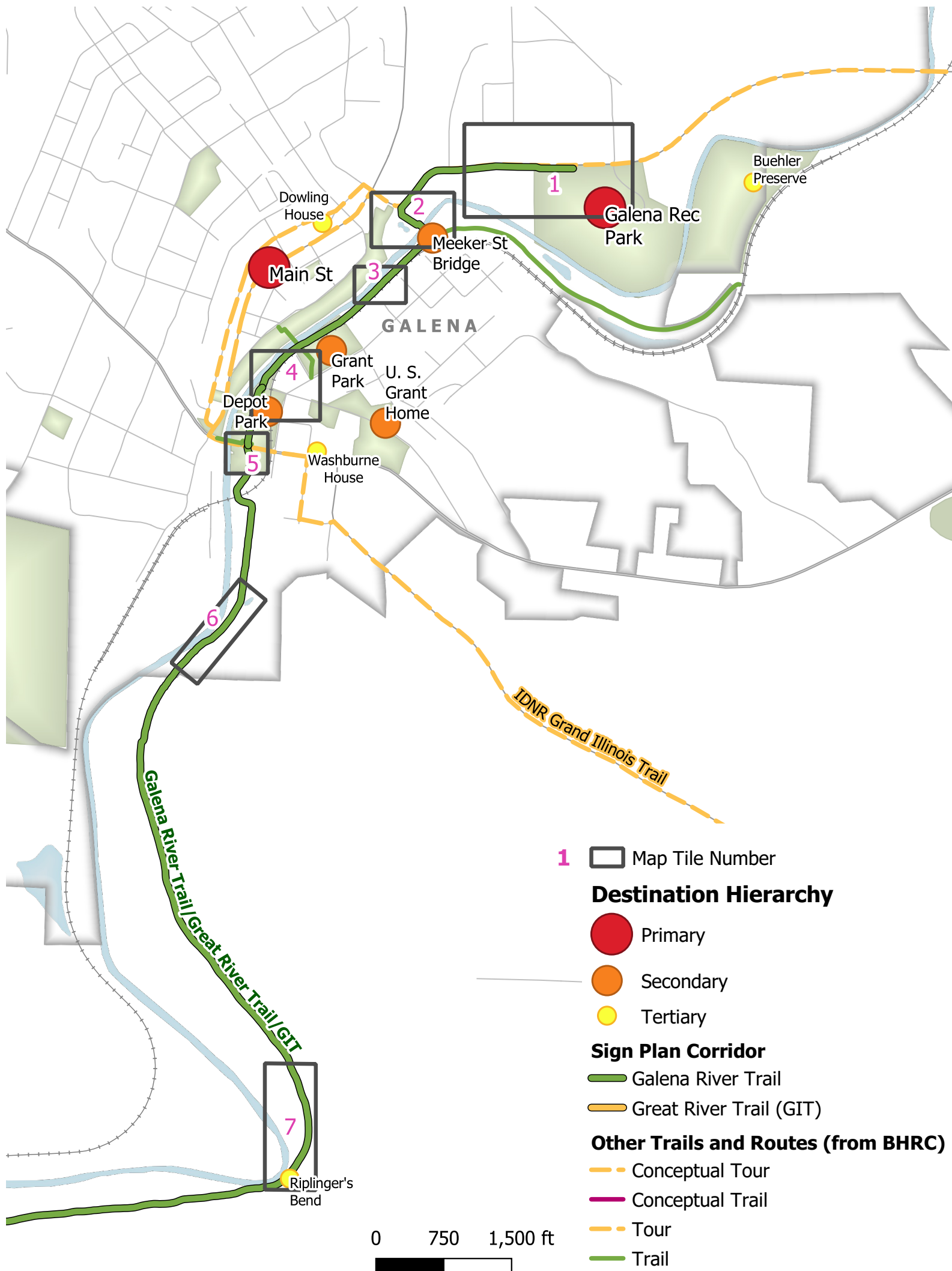
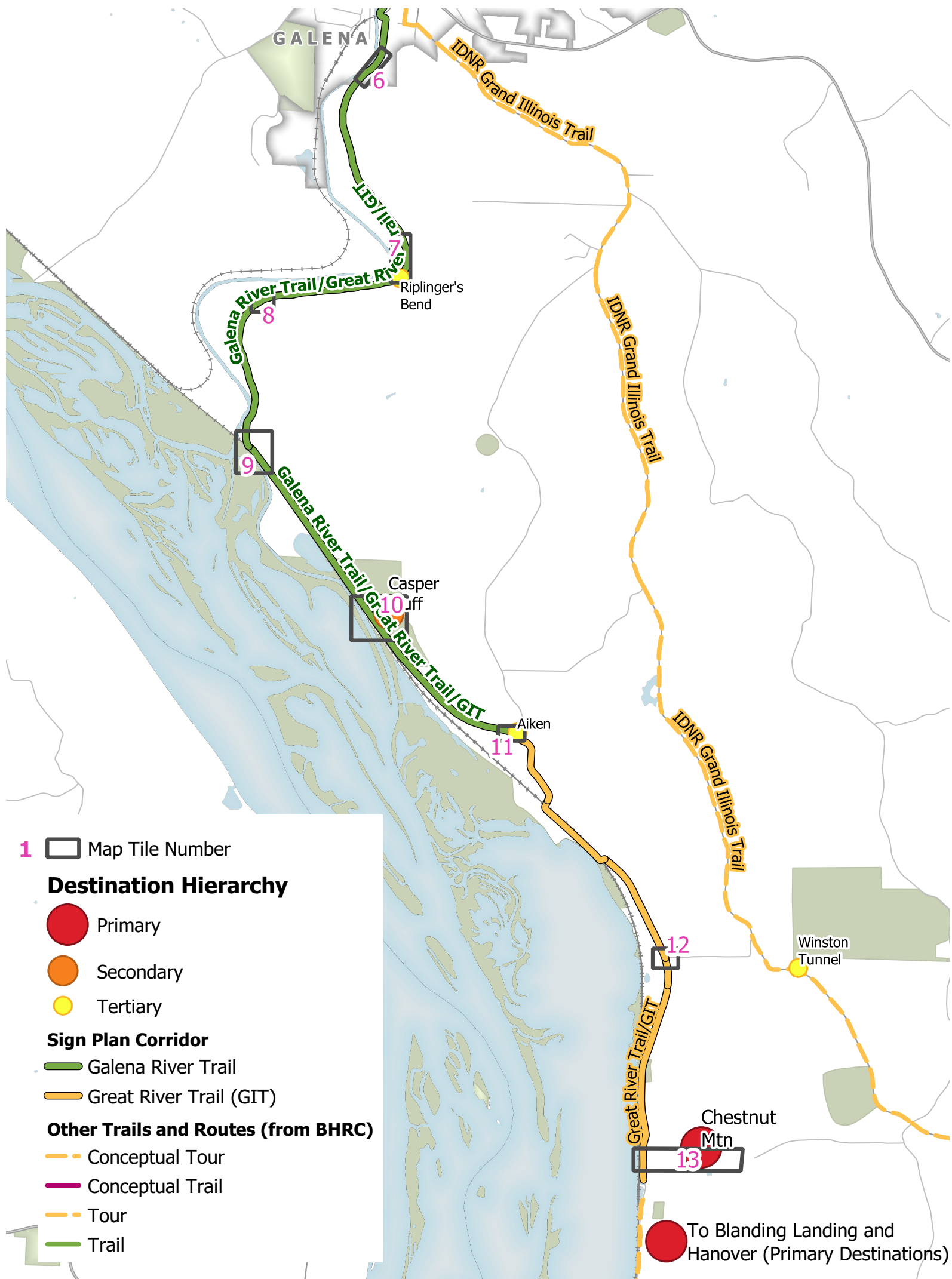


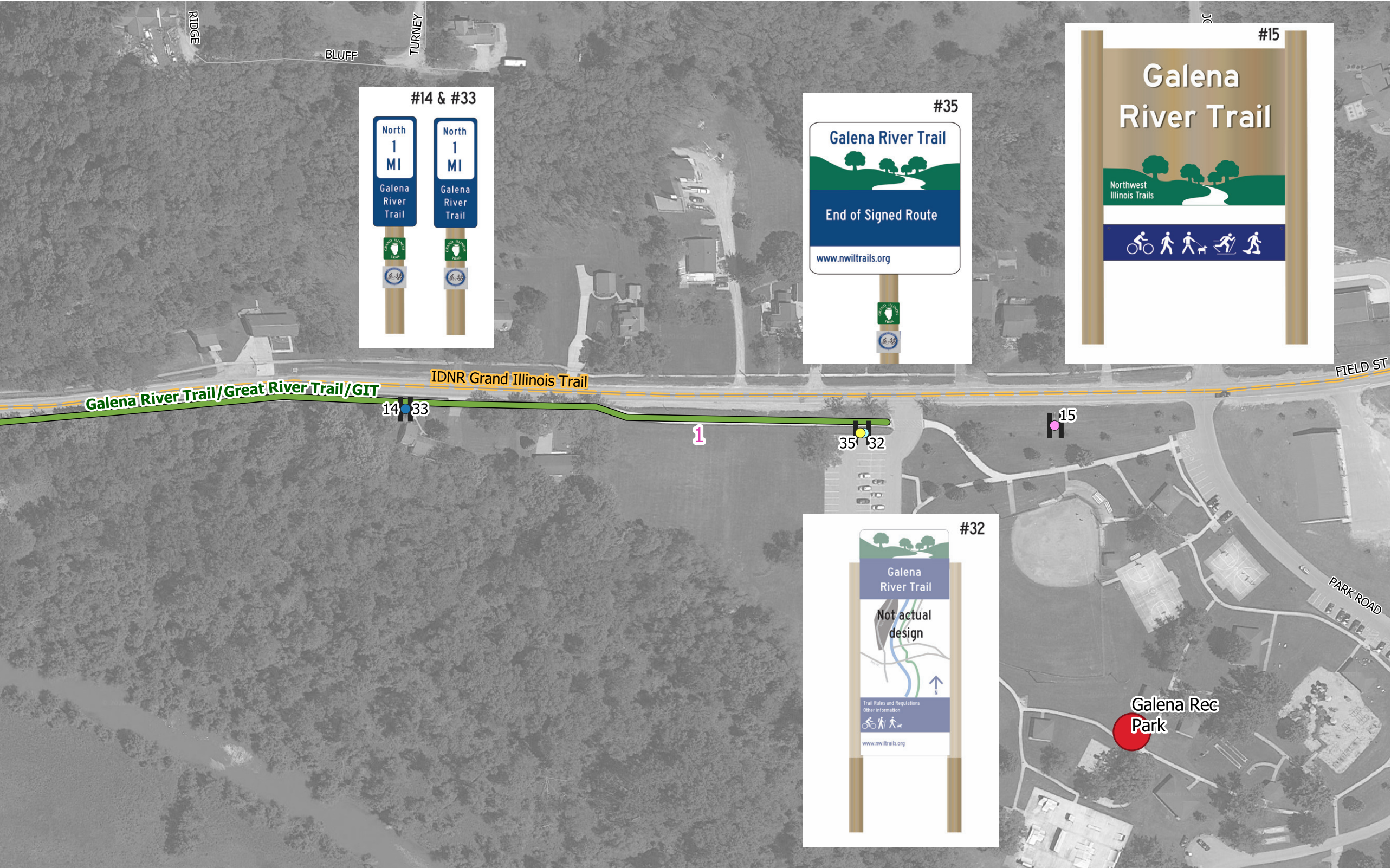
Overview Map for the Galena River Trail, Northern Section



Overview Map for the Galena River Trail, Southern Section



Galena River Trail, Map Tile 1



- 1

Map Tile Number
- Galena River Trail

Trail

Tour
- Destination Hierarchy

Tertiary

Secondary

Primary
- Wayfinding Assemblies

Directional or Turn

Interpretive

Gateway

Street Name/Trail Name

Map

Directional + Mileage Marker

Mileage Marker
- Other Trail and Routes (from BHRC)

Conceptual Tour

Conceptual Trail

Tour

Trail

Assembly ID	On Street	At Street	Existing Post?	Place Post	Other Post?	Facing	Notes
14	Galena River Trail	700' E of Wann Street	New	South side of street; 700' E of Wann Street; 700' W of Galena Rec Park driveway	Back to back with #33	W	ROW is a bit constrained here
15	Field Street	Galena Rec Park	New	10' south of Existing Recreation Park Sign		N	
32	Galena River Trail	30' W of park driveway	New	30' W of driveway	Back to back with #35	E	logos: Grand Illinois Trail, Great River Trail
33	Galena River Trail	700' E of Wann Street	New	South side of street; 700' E of Wann Street; 700' W of Galena Rec Park driveway	Back to back with #14	E	
35	Galena River Trail	30' W of park driveway	New	30' W of driveway	Back to back with #32	W	

Galena River Trail, Map Tile 2



1

Map Tile Number

Galena River Trail

Trail

Tour

Destination Hierarchy

Tertiary

Secondary

Primary

Wayfinding Assemblies

Directional or Turn

Interpretive

Gateway

Street Name/Trail Name

Map

Directional + Mileage Marker

Mileage Marker

Other Trail and Routes (from BHRC)

Conceptual Tour

Conceptual Trail

Tour

Trail

Assembly ID	On Street	At Street	Existing Post?	Place Post	Other Post?	Facing	Notes
34	Galena River Trail	Meeker St Bridge (south section)	New	At trail intersection, on southeast side of path	Back to back with #36	SW	logos: Grand Illinois Trail, Great River Trail
36	Galena River Trail	Meeker St Bridge (south section)	New	At trail intersection, on southeast side of path	Back to back with #34	NE	logos: Grand Illinois Trail, Great River Trail
37	Galena River Trail	Meeker St Bridge (south section)	New	At trail intersection, on southeast side of path	Perpendicular to #s 34, 36	NW	logos: Grand Illinois Trail, Great River Trail
38	Galena River Trail	Meeker St	New	10-15 ft south of Meeker St crosswalk	Perpendicular to #39.	NE	logos: Grand Illinois Trail, Great River Trail
39	Galena River Trail	Meeker St	New	10-15 ft south of Meeker St crosswalk	Perpendicular to #38.	SE	logos: Grand Illinois Trail, Great River Trail
40	Meeker St	Galena River Trail / Great River Trail	Exist	150' N of trail/road intersection	Existing telephone pole on W side (with ex. bike route signs)	NW	Placed this a bit further back from intersection because of downhill/speeds.
41	Meeker St	N Main St	New	80' S of interseciion with N Main St		SE	Placed a bit further back because of very narrow ROW.

Galena River Trail, Map Tile 3



- 1 Map Tile Number
- Galena River Trail**
 Trail
 Tour
- Destination Hierarchy**
 Tertiary
 Secondary
 Primary
- Wayfinding Assemblies**
 Directional or Turn
 Interpretive
 Gateway
 Street Name/Trail Name
 Map
 Directional + Mileage Marker
 Mileage Marker
- Other Trail and Routes (from BHRC)**
 Conceptual Tour
 Conceptual Trail
 Tour
 Trail

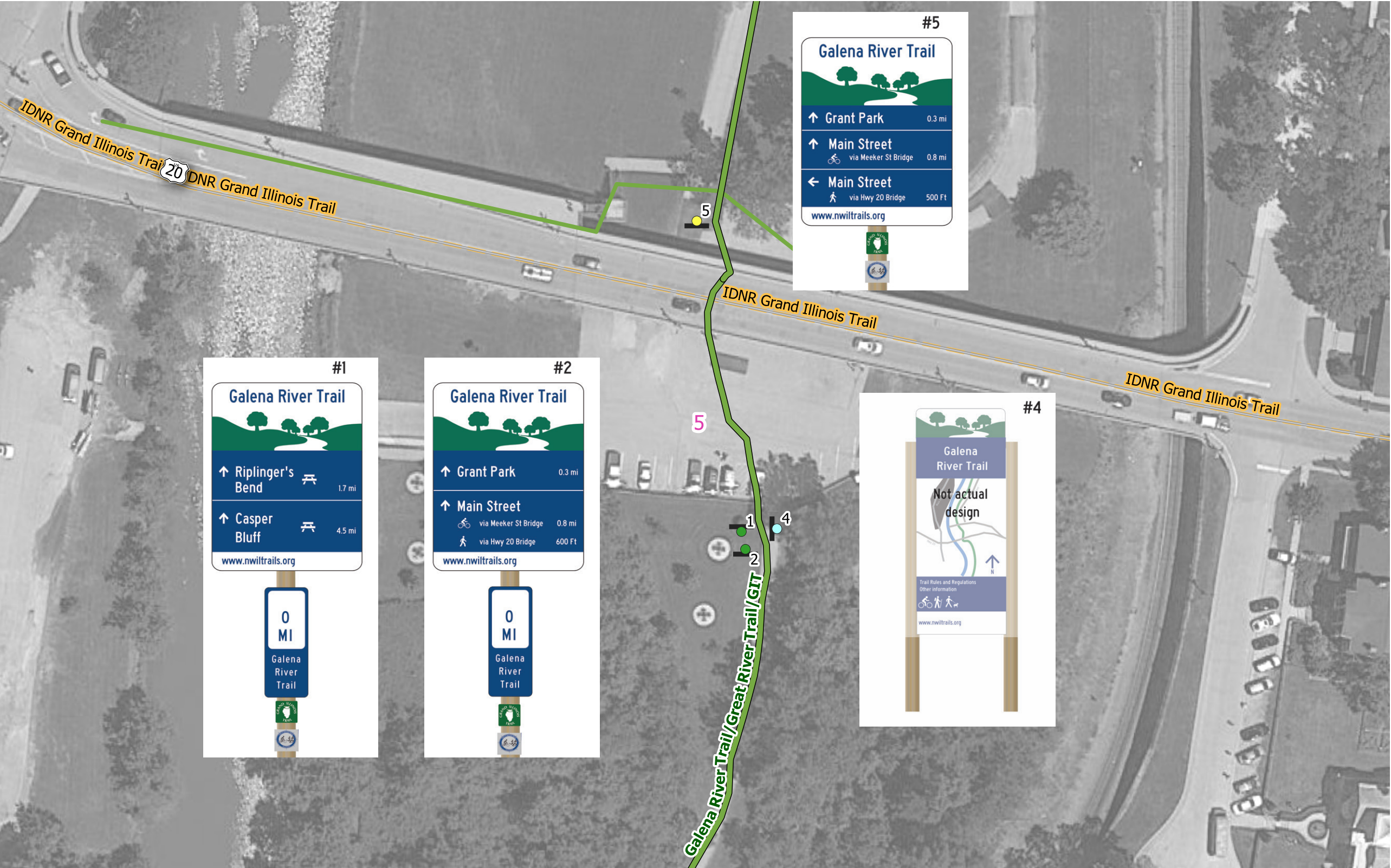
Assembly ID	On Street	At Street	Existing Post?	Place Post	Other Post?	Facing	Notes
8	Galena River Trail	Between Grant Park Bridge and Meeker St Bridge	New	West side of trail. About 750' S of Meeker St Bridge	Back to back with #9	SW	
9	Galena River Trail	Between Grant Park Bridge and Meeker St Bridge	New	West side of trail. About 750' S of Meeker St Bridge	Back to back with #8	NE	

Galena River Trail, Map Tile 4



Assembly ID	On Street	At Street	Existing Post?	Place Post	Other Post?	Facing	Notes
3	Galena River Trail	Depot Park Parking lot	New	5' N of parking lot, 10' E of trail		E	Should be visible to drivers entering Depot Park parking lot
6	Depot Park parking lot	Bouthillier St	New	10' N of Barnabas Eldridge/John Deere signs		S	logos: Grand Illinois Trail, Great River Trail
7	Depot Park parking lot	Bouthillier St	New	N of bike rack		S	Orient map placement so that map users are facing north
10	Galena River Trail	Depot Park Parking Lot	New	15' N of Depot Park Parking lot	Back to back with #11	N	logos: Grand Illinois Trail, Great River Trail
11	Galena River Trail	Depot Park Parking Lot	New	15' N of Depot Park Parking lot	Back to back with #10	N	logos: Grand Illinois Trail, Great River Trail
12	Bouthillier St	Park Ave	New	50' W of Park Ave		W	
13	Grant Park	Park Avenue	Exist	10' NE of Johnson Street		S	Existing park sign--no change

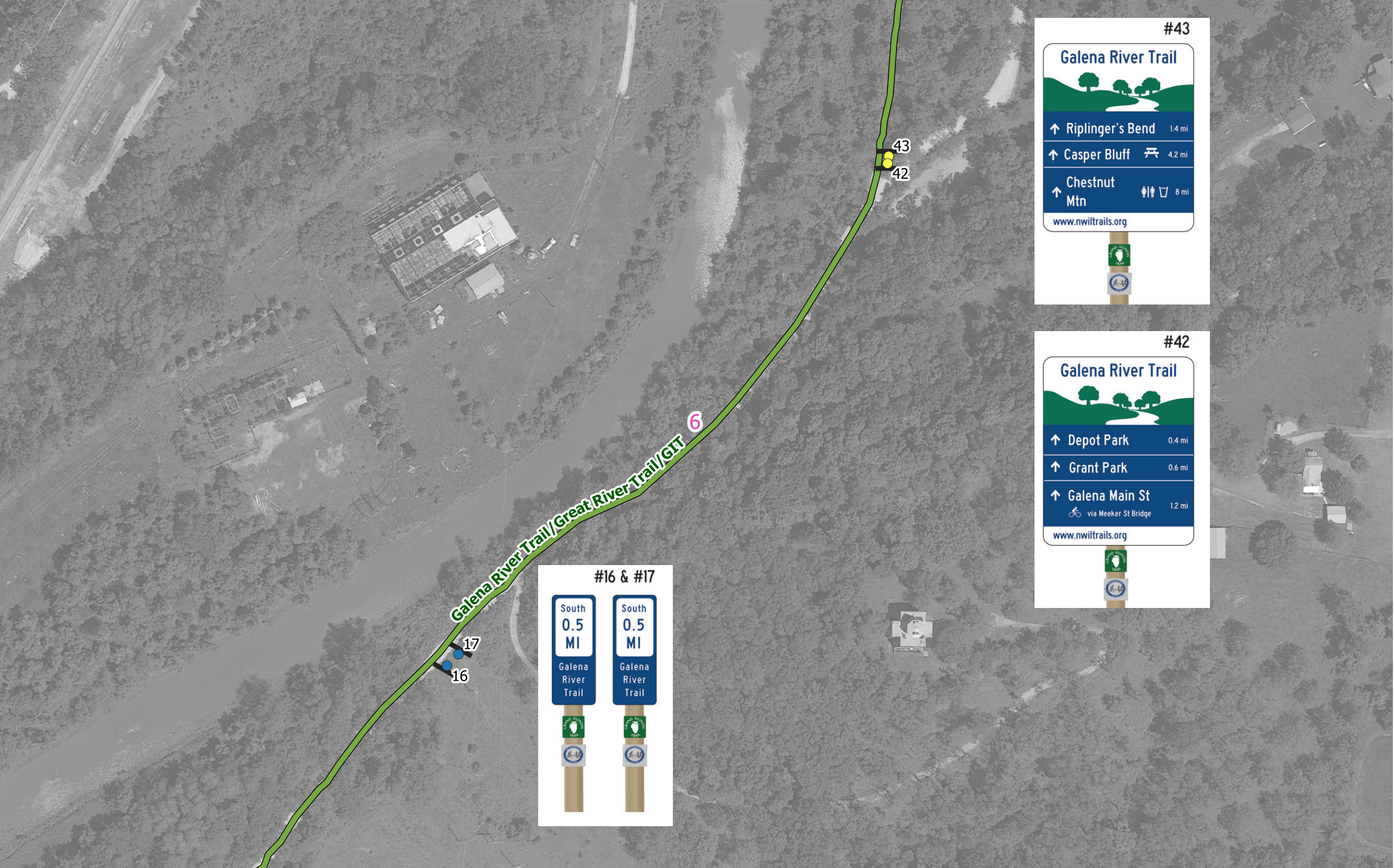
Galena River Trail, Map Tile 5



- 1 Map Tile Number
- Galena River Trail**
 Trail
 Tour
- Destination Hierarchy**
 Tertiary
 Secondary
 Primary
- Wayfinding Assemblies**
 Directional or Turn
 Interpretive
 Gateway
 Street Name/Trail Name
 Map
 Directional + Mileage Marker
 Mileage Marker
- Other Trail and Routes (from BHRC)**
 Conceptual Tour
 Conceptual Trail
 Tour
 Trail

Assembly ID	On Street	At Street	Existing Post?	Place Post	Other Post?	Facing	Notes
1	Galena River Trail	Boat Launch Parking lot	New	10' S of parking lot	Back to back with #2	N	logos: Grand Illinois Trail, Great River Trail
2	Galena River Trail	Boat Launch Parking lot	New	10' S of parking lot	Back to back with #1	S	logos: Grand Illinois Trail, Great River Trail
4	Galena River Trail	Boat Launch Parking Lot	Exist	Existing Map kiosk shelter south of parking lot		W	Map will have north at top, even though users are facing east
5	Great River Trail / Depot Park Boat Launch Parking Lot	Hwy 20 bridge steps	New	3' south of sidewalk to Hwy 20 bridge steps		S	logos: Grand Illinois Trail, Great River Trail

Galena River Trail, Map Tile 6



Assembly ID	On Street	At Street	Existing Post?	Place Post	Other Post?	Facing	Notes
16	Galena River Trail	~300' N of the city limit	Exist	Existing Mile Marker post south of Park Ave	Back to back with #17	SW	
17	Galena River Trail	~300' N of the city limit	Exist	Existing Mile Marker post south of Park Ave	Back to back with #16	NE	
42	Galena River Trail	Park Ave	New	5-10' N of intersection with Park Ave	Back to back with #43	S	logos: Grand Illinois Trail, Great River Trail
43	Galena River Trail	Park Ave	New	5-10' N of intersection with Park Ave	Back to back with #42	N	logos: Grand Illinois Trail, Great River Trail

1

Map Tile Number

Galena River Trail

Trail

Tour

Destination Hierarchy

Tertiary

Secondary

Primary

Wayfinding Assemblies

Directional or Turn

Interpretive

Gateway

Street Name/Trail Name

Map

Directional + Mileage Marker

Mileage Marker

Other Trail and Routes (from BHRC)

Conceptual Tour

Conceptual Trail

Tour

Trail



1

Map Tile Number

Galena River Trail

Trail

Tour

Destination Hierarchy

Tertiary

Secondary

Primary

Wayfinding Assemblies

Directional or Turn

Interpretive

Gateway

Street Name/Trail Name

Map

Directional + Mileage Marker

Mileage Marker

Other Trail and Routes (from BHRC)

Conceptual Tour

Conceptual Trail

Tour

Trail

Assembly ID	On Street	At Street	Existing Post?	Place Post	Other Post?	Facing	Notes
18	Galena River Trail	1,200' N of Riplinger's Bend	Exist	Existing mile marker post 1200' N of Riplinger's Bend	Back to back with #19	N	
19	Galena River Trail	1,200' N of Riplinger's Bend	Exist	Existing mile marker post 1200' N of Riplinger's Bend	Back to back with #18	S	
28	Galena River Trail	Riplinger's Bend Overlook	New	10' NW of trail		SE	Interpretive sign could note that this is Riplinger's Bend, note differnt types of wildlife that might be seen from path.
53	Galena River Trail	Riplinger's Bend Overlook	New	5' SE of trail		NW	



Assembly ID	On Street	At Street	Existing Post?	Place Post	Other Post?	Facing	Notes
20	Galena River Trail	About 4,000' S of Riplinger's Bend (1 mile south of last mile marker)	New	10' E/SE of trail	Back to back with #21	SW	
21	Galena River Trail	About 4,000' S of Riplinger's Bend (1 mile south of last mile marker)	New	10' E/SE of trail	Back to back with #20	NE	

- 1

Map Tile Number
- Galena River Trail

Trail

Tour
- Destination Hierarchy

Tertiary

Secondary

Primary
- Wayfinding Assemblies

Directional or Turn

Interpretive

Gateway

Street Name/Trail Name

Map

Directional + Mileage Marker

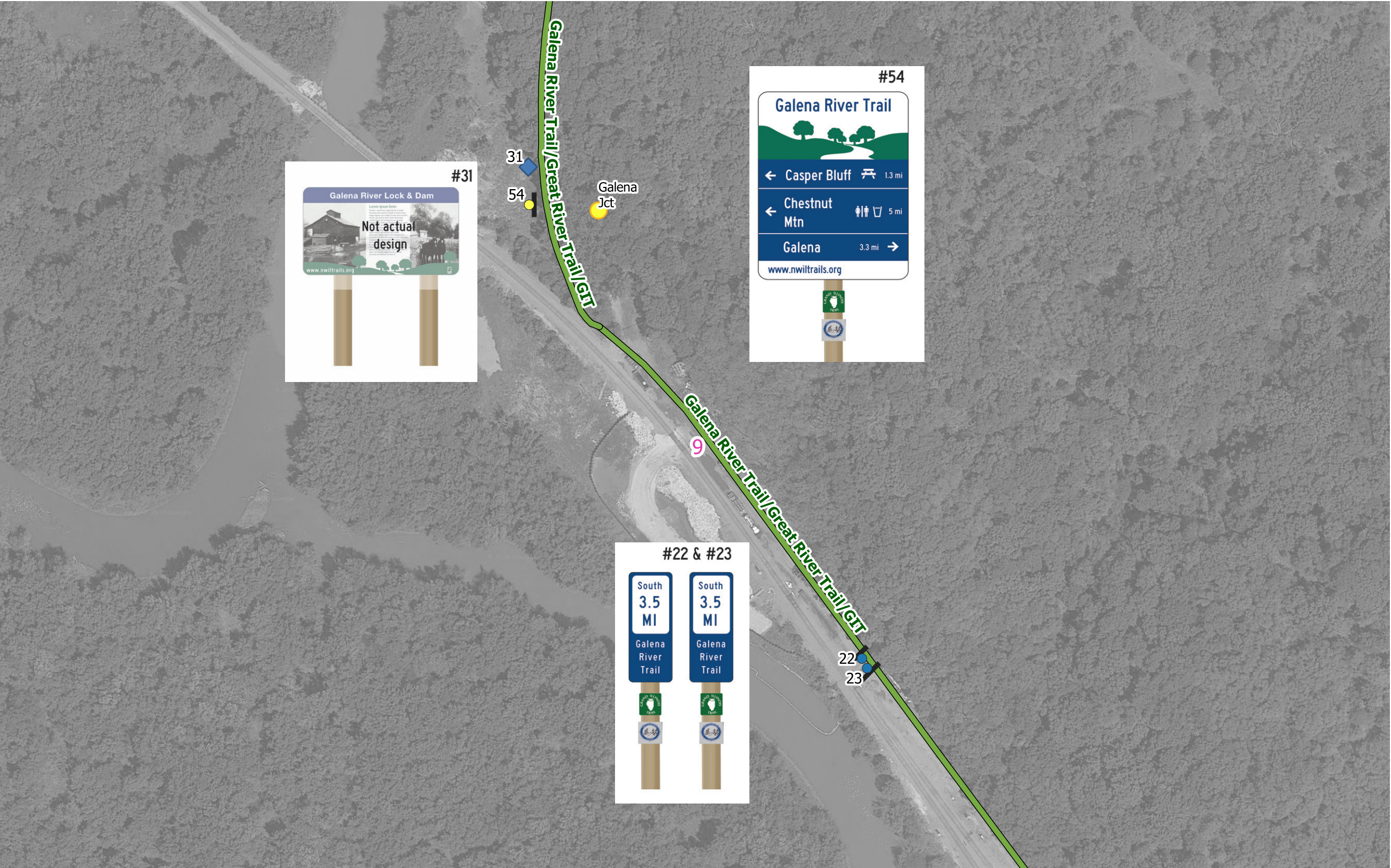
Mileage Marker
- Other Trail and Routes (from BHRC)

Conceptual Tour

Conceptual Trail

Tour

Trail



1

Map Tile Number

Galena River Trail

Trail

Tour

Destination Hierarchy

Tertiary

Secondary

Primary

Wayfinding Assemblies

Directional or Turn

Interpretive

Gateway

Street Name/Trail Name

Map

Directional + Mileage Marker

Mileage Marker

Other Trail and Routes (from BHRC)

Conceptual Tour

Conceptual Trail

Tour

Trail

Assembly ID	On Street	At Street	Existing Post?	Place Post	Other Post?	Facing	Notes
22	Galena River Trail	1 mile from previous mile marker	New	10' W of trail	Back to back with #23	NW	
23	Galena River Trail	1 mile from previous mile marker	New	10' W of trail	Back to back with #22	SE	
31	Galena River Trail	~200 feet north of railroad tracks	Existing	Existing Interpretive Sign on the Galena River Lock & Dam			There is an interpretive sign on the Galena River Lock and Dam. Underbrush prevents viewing the river. Is there a way to clear underbrush/allow viewing of the site of the lock and dam? Or, perhaps change the topic to the 2015 Train derailment?
54	Galena River Trail	~200 feet north of railroad tracks	New			E	

Galena River Trail, Map Tile 10



1

Map Tile Number

Galena River Trail

Trail

Tour

Destination Hierarchy

Tertiary

Secondary

Primary

Wayfinding Assemblies

Directional or Turn

Interpretive

Gateway

Street Name/Trail Name

Map

Directional + Mileage Marker

Mileage Marker

Other Trail and Routes (from BHRC)

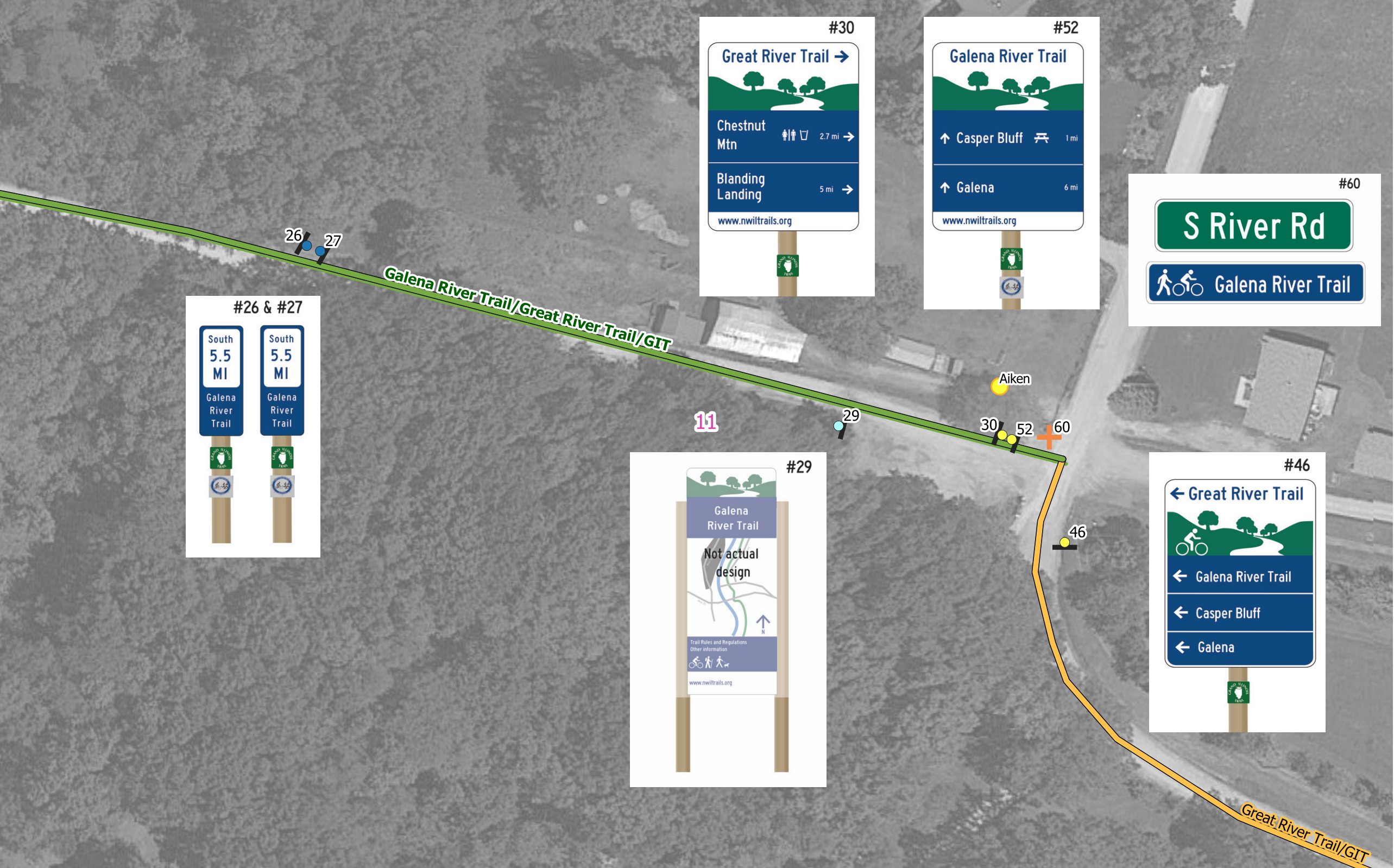
Conceptual Tour

Conceptual Trail

Tour

Trail

Assembly ID	On Street	At Street	Existing Post?	Place Post	Other Post?	Facing	Notes
24	Galena River Trail	1.1 miles north of Aiken	New	10' W of trail	Back to back with #25	NW	
25	Galena River Trail	1.1 miles north of Aiken	New	10' W of trail	Back to back with #24	SE	
44	Galena River Trail	At access point to Casper Bluff	New	Place on SW side of trail, at access point to Casper Bluff	Back to back with #45, Perpendicular to #47	SE	logos: Grand Illinois Trail, Great River Trail
45	Galena River Trail	At access point to Casper Bluff	New	Place on SW side of trail, at access point to Casper Bluff	Back to back with #44, Perpendicular to #47	NW	logos: Grand Illinois Trail, Great River Trail
47	Galena River Trail	At access point to Casper Bluff	New	Place on SW side of trail, at access point to Casper Bluff	Perpendicular to #44 & #45	NE	logos: Grand Illinois Trail, Great River Trail



- 1 Map Tile Number
- Galena River Trail**
 Trail
 Tour
- Destination Hierarchy**
 Tertiary
 Secondary
 Primary
- Wayfinding Assemblies**
 Directional or Turn
 Interpretive
 Gateway
 Street Name/Trail Name
 Map
 Directional + Mileage Marker
 Mileage Marker
- Other Trail and Routes (from BHRC)**
 Conceptual Tour
 Conceptual Trail
 Tour
 Trail

Assembly ID	On Street	At Street	Existing Post?	Place Post	Other Post?	Facing	Notes
26	Galena River Trail	500' N of Aiken and intersection with Great River Road / GIT	New	10-12' N of trail	Back to back with #27	W	
27	Galena River Trail	500' N of Aiken and intersection with Great River Road / GIT	New	10-12' N of trail	Back to back with #26	E	
29	Galena River Trail	S River Road	New	120' W of intersection with River Road, on south side of trail (by parking lot)		E	Map will have north at top, even though users are facing west
30	Galena River Trail	S River Road	New	25' W of intersection with River Road, on north side of trail	Back to back with #52	W/NW	logos: Grand Illinois Trail
46	Galena River Trail	S River Road	New	50' S of intersection with Galena River Trail		S	logos: Grand Illinois Trail, Great River Trail
52	Galena River Trail	S River Road	New	25' W of intersection with River Road, on north side of trail	Back to back with #30	W/NW	logos: Grand Illinois Trail, Great River Trail
60	Galena River Trail	S River Road	New	12' W of intersection with River Road, on north side of trail		NSEW	



- 1 Map Tile Number
- Galena River Trail**
 Trail
 Tour
- Destination Hierarchy**
 Tertiary
 Secondary
 Primary
- Wayfinding Assemblies**
 Directional or Turn
 Interpretive
 Gateway
 Street Name/Trail Name
 Map
 Directional + Mileage Marker
 Mileage Marker
- Other Trail and Routes (from BHRC)**
 Conceptual Tour
 Conceptual Trail
 Tour
 Trail

Assembly ID	On Street	At Street	Existing Post?	Place Post	Other Post?	Facing	Notes
48	Great River Trail / S River Road	W Sand Hill Road	New	40' S of intersection with W Sand Hill Rd		S	logos: Grand Illinois Trail
49	Great River Trail / S River Road	W Sand Hill Road	New	40' N of intersection with W Sand Hill Rd		N	logos: Grand Illinois Trail
61	W Sand Hill Rd	S River Road	New	40' E of intersection with S River Rd		W	

Galena River Trail, Map Tile 13



- 1 Map Tile Number
- Galena River Trail**
 Trail
 Tour
- Destination Hierarchy**
 Tertiary
 Secondary
 Primary
- Wayfinding Assemblies**
 Directional or Turn
 Interpretive
 Gateway
 Street Name/Trail Name
 Map
 Directional + Mileage Marker
 Mileage Marker
- Other Trail and Routes (from BHRC)**
 Conceptual Tour
 Conceptual Trail
 Tour
 Trail

Assembly ID	On Street	At Street	Existing Post?	Place Post	Other Post?	Facing	Notes
50	Great River Trail / S River Road	At gravel road to chairlift	New	At gravel road to chairlift	Back to back with #62	S	logos: Grand Illinois Trail.
51	Great River Trail / S River Road	Chestnut Mtn Boat Dock	New	Across River Road from the boat dock		N	logos: Grand Illinois Trail.
62	Great River Trail / S River Road	At gravel road to chairlift	New	At gravel road to chairlift	Back to back with #50	N	logos: Grand Illinois Trail.
63	On top of Chestnut Mountain Resort	Exact placement to be determined	New	Exact placement will require agreement from Chestnut Mountain Resort		S	Map will have north at top